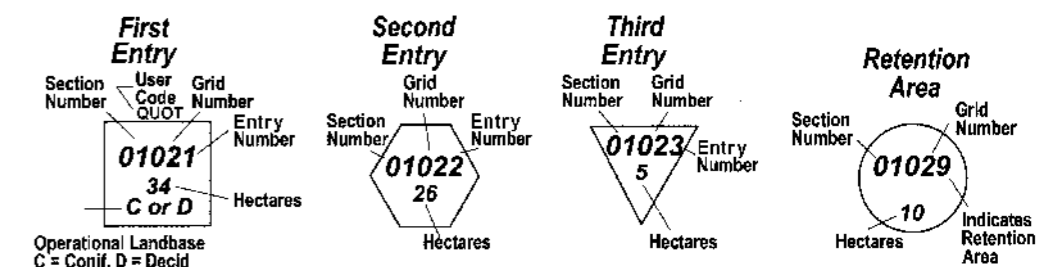
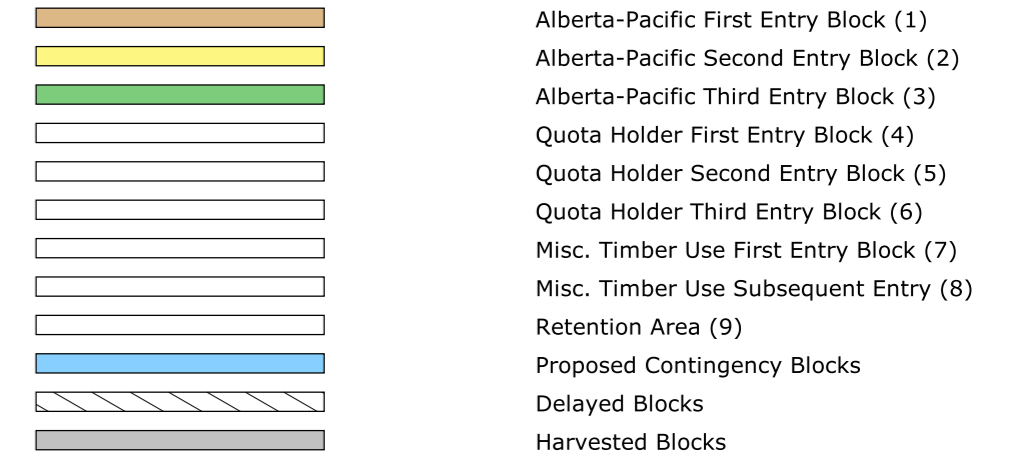


Planning Unit 072244

Alberta-Pacific Harvest Plan



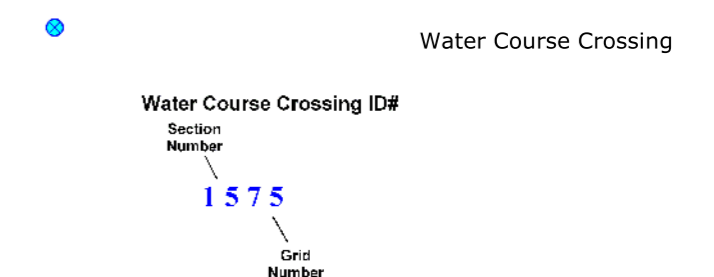
Operational Harvest



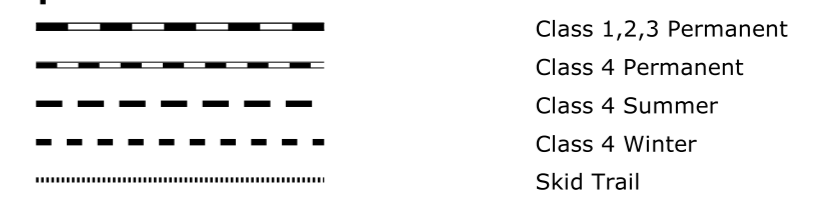
Operational User Codes

- MTU - Misc. Timber Use First Pass
- MTU2 - Misc. Timber Use Second Pass
- MTU3 - Misc. Timber Use Third Pass
- NFPL - Northland Forest Products
- STJE - St. Jean Lumber
- SPML - Spuceland Millworks
- QUOT - Quota Holder
- S11 - S11 Logging Company Ltd.
- VAND - Vanderwell Contractors
- WEST - Millar Western
- APLY - Alberta Plywood Ltd.
- BOBL - Ed Bobocel Lumber(1993) Ltd.
- GHLT - Ghost Lake Timber Inc.

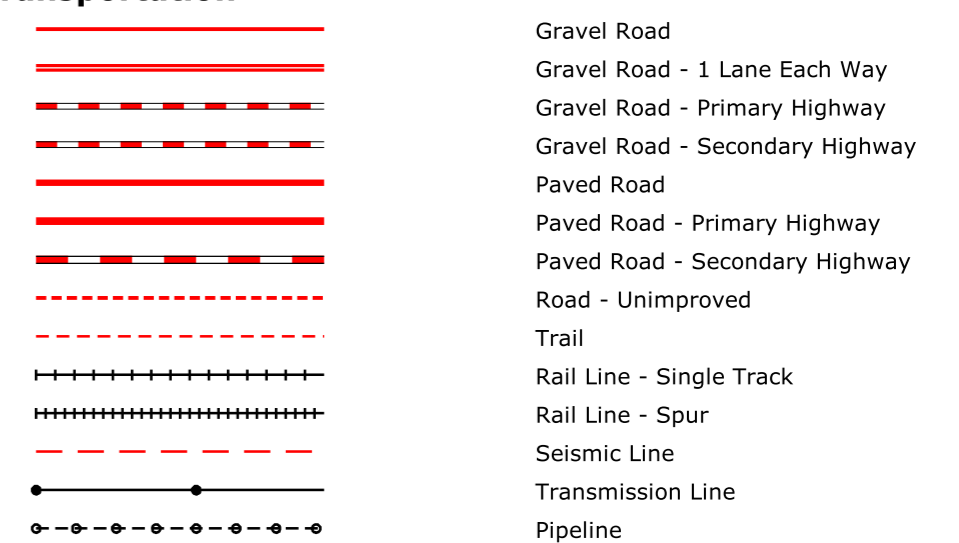
Proposed Crossing



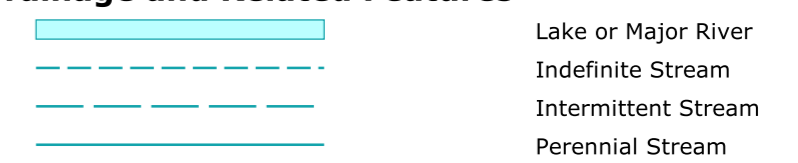
Proposed Roads



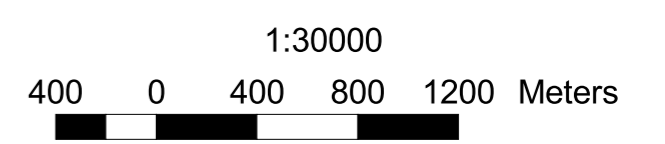
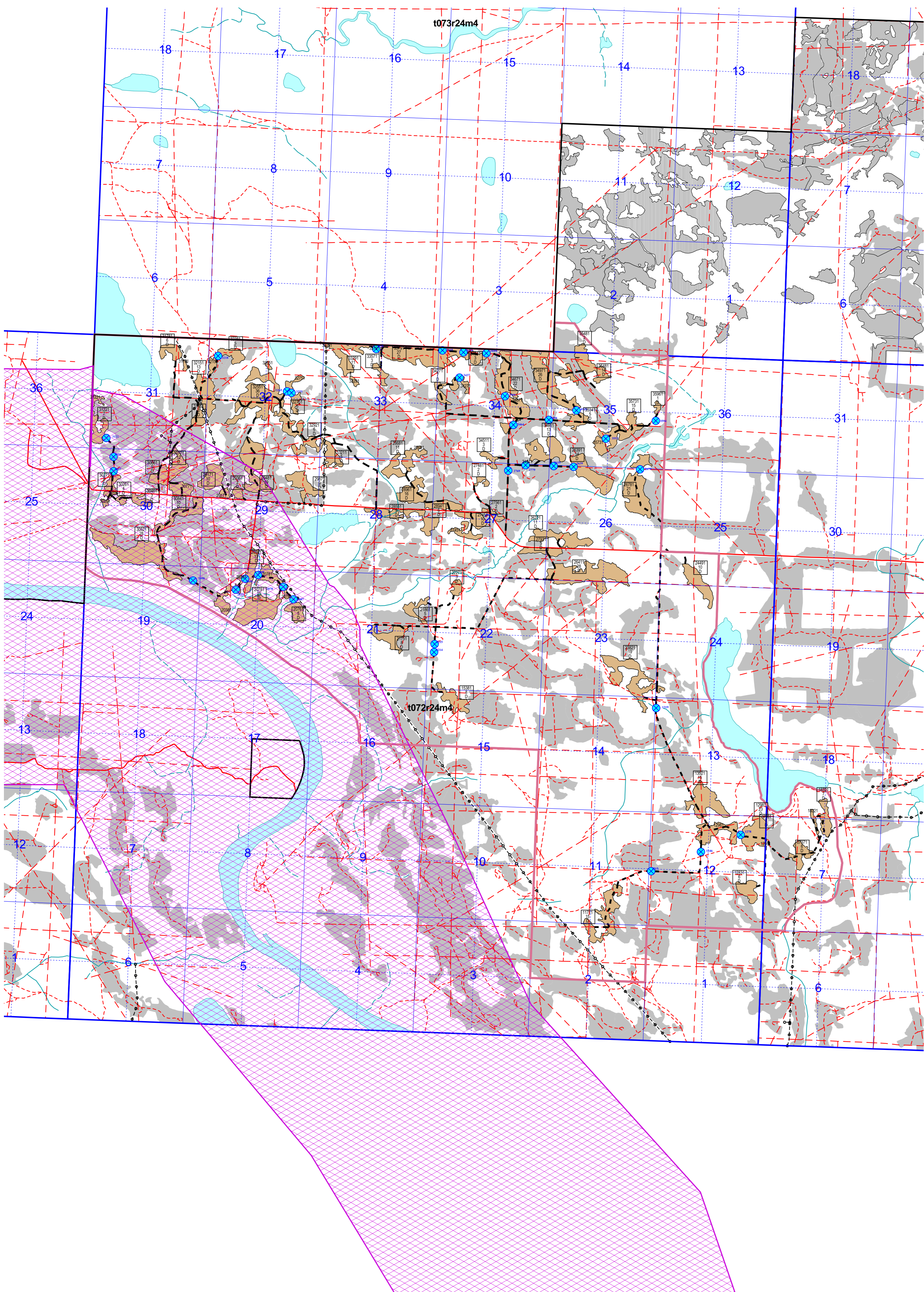
Transportation



Drainage and Related Features



Cadastral Features



Plot generated on Tuesday April 19, 2016 at 4:02PM

